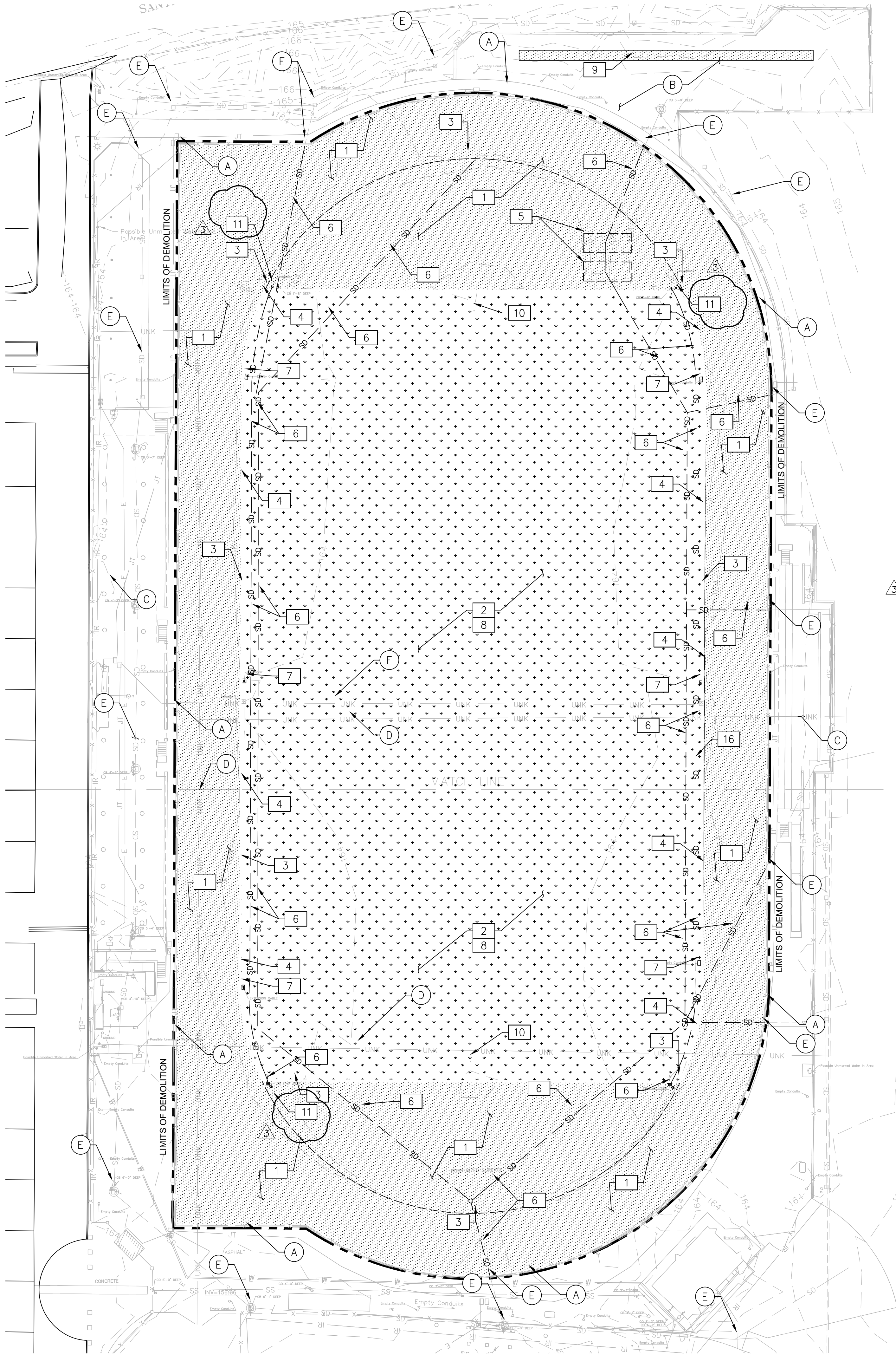


This plan document set is the sole property of Lloyd Consulting Group, LLC. No alterations to these plans, other than adding "as-built" information, are allowed by anyone other than authorized Lloyd Consulting Group, LLC employees.



### PROTECT IN PLACE KEYNOTES

- (A) PROTECT IN PLACE EXISTING CONCRETE CURB, PERIMETER FENCE, AND GATES.
- (B) PROTECT IN PLACE EXISTING ASPHALT PAVEMENT.
- (C) PROTECT IN PLACE EXISTING BLEACHERS, STAIRS AND RAMPS.
- (D) PROTECT IN PLACE EXISTING DOMESTIC WATER LINE.
- (E) PROTECT IN PLACE EXISTING STORMWATER DRAIN LINE.
- (F) PROTECT IN PLACE EXISTING ELECTRICAL SLEEVING AND LEADS.

### DEMOLITION KEYNOTES

- 1 REMOVE AND DISPOSE OF EXISTING TRACK SURFACING, ASPHALT AND AGGREGATE BASE SECTION. REFER TO GEOTECHNICAL REPORT FOR SUBGRADE REQUIREMENTS AND APPROXIMATE DEPTH.
- 2 REMOVE AND DISPOSE OF EXISTING SYNTHETIC TURF, PERMEABLE BASE AND FLAT DRAINS. REFER TO GEOTECHNICAL REPORT FOR ADDITIONAL REQUIREMENTS & APPROXIMATE DEPTH.
- 3 REMOVE AND DISPOSE OF EXISTING CONCRETE CURB.
- 4 REMOVE AND DISPOSE OF EXISTING SLOTTED DRAIN AND CONCRETE ENCASEMENT.
- 5 REMOVED AND DISPOSE OF EXISTING CONCRETE JUMP PIT CURBS AND PIT SAND.
- 6 REMOVE AND DISPOSE OF EXISTING DRAIN INLETS, DRAIN PIPE, DRAIN ROCK & FABRIC WITHIN PROJECT LIMITS.
- 7 REMOVE AND DISPOSE OF EXISTING ELECTRICAL BOXES. PROTECT EXISTING CONDUIT AND ELECTRICAL LEADS IN PLACE TO RECEIVE NEW BOXES.
- 8 REMOVE AND DISPOSE OF ALL EXISTING IRRIGATION OR DRAINAGE PIPES. WITHIN THE CONSTRUCTION LIMITS. THE CONTRACTOR MUST VERIFY ALL EXISTING IRRIGATION AND/OR DRAINAGE SOURCES. CONTRACTOR IS RESPONSIBLE TO MAINTAIN BOTH FLOW AND AUTOMATED CONTROL SERVICE TO ANY ADJACENT LANDSCAPE OR DRAINAGE AREAS DURING AND AFTER CONSTRUCTION.
- 9 REMOVE AND DISPOSE OF EXISTING POLE VAULT TRACK SURFACE WHILE PROTECTING EXISTING ASPHALT IN PLACE.
- 10 REMOVE AND DISPOSE OF EXISTING FOOTBALL GOAL POSTS AND FOOTINGS.
- 11 REMOVE AND DISPOSE OF EXISTING TRACK LANE GATES.

### TOTAL DISTURBED AREA

TOTAL DISTURBED AREA = 3.6 ACRES

### LEGEND

- EXISTING TRACK SURFACE AND ASPHALT BASE TO BE REMOVED
- EXISTING SYNTHETIC TURF PLAYING FIELD AND BASE TO BE REMOVED

#### DESCRIPTION

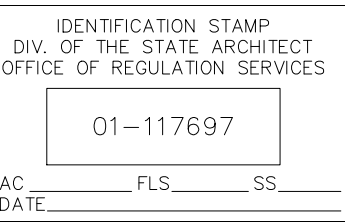
FENCE LINE  
BUILDING LINE  
UNDERGROUND ELECTRICAL  
UNDERGROUND IRRIGATION  
UNDERGROUND JOINT UTILITIES  
UNDERGROUND WATER  
UNDERGROUND UNKNOWN  
UNDERGROUND SANITARY SEWER  
UNDERGROUND STORM SEWER

#### ABBREVIATIONS

AC	ASPHALT CONCRETE	GB	GRADE BREAK
AD	AREA DRAIN	GND	GROUND ELEVATION
AL	AREA LIGHT	JP	JOINT POLE
BC	BUILDING CORNER	ICV	IRRIGATION CONTROL VALVE
BOW	BACK OF WALK	INV	INVERT
BOL	BOLLARD	MH	MANHOLE
BFP	BACKFLOW PREVENTER	PS	PARKING STRIPE
BL	BUILDING LINE	RPS	RUBBERIZED PLAY SURFACE
CB	CATCH BASIN	RTWL	RETAINING WALL
CLF	CHAIN-LINK FENCE	RWLS	RAINWATER LEADER SURFACE RELEASE
C	CONCRETE	RWLUG	RAINWATER LEADER UNDERGROUND RELEASE
C BOX	COMMUNICATIONS BOX	S BOX	SIGNAL BOX
COL	COLUMN	SD	STORM DRAIN
EC	EDGE OF CONCRETE	SL	STREET LIGHT
EP	EDGE OF PAVEMENT	SS	SANITARY SEWER
EOT	EDGE OF TRACK	SSCO	SANITARY SEWER CLEANOUT
E BOX	ELECTRICAL BOX	TC	TOP OF CURB
E PB	ELECTRICAL PULL BOX	TV	TELEPHONE VAULT
FF	FINISHED FLOOR ELEVATION	WIF	WROUGHT-IRON FENCE
FL	FLOW LINE	WF	WATER FOUNTAIN
FP	FLAG POLE	WM	WATER METER
G HNG	GATE HINGE	WV	WATER VALVE
G LTCH	GATE LATCH		

### GENERAL DEMOLITION NOTES

- THE CONTRACTOR SHALL VISIT THE SITE PRIOR TO BID SUBMITTAL IN ORDER TO DETERMINE THE EXTENT AND CONDITIONS OF SITE DEMOLITION AND TO FIELD VERIFY SITE CONDITIONS. THE CONTRACTOR SHALL NOTIFY THE OWNER OF ANY DISCREPANCIES PRIOR TO BID.
- THE CONTRACTOR SHALL PERFORM ALL CLEARING, DEMOLITION AND REMOVAL SITE PREPARATIONS NECESSARY FOR THE EXECUTION OF THE WORK CONTAINED IN THE CONTRACT DOCUMENTS.
- EXISTING STORM DRAIN FACILITIES WITHIN THE LIMITS OF CONSTRUCTION SHALL BE PROTECTED FROM CONSTRUCTION DEBRIS INTRUSION. THE CONTRACTOR SHALL FLUSH AND CLEAN EXISTING DRAINAGE SYSTEMS THAT ARE TO BE PROTECTED IN PLACE, WITHIN THE PROJECT LIMITS, TO THE POINT OF DISCHARGE. ALL CLEAN OF SITE AND DRAINAGE SYSTEMS SHALL MEET ALL CALIFORNIA SAFETY AND WATER QUALITY REQUIREMENTS SET BY THE STATE BOARD OF WATER RESOURCES.
- THE CONTRACTOR SHALL VERIFY THE LOCATIONS OF ALL UTILITIES, STRUCTURES, AND SERVICES BEFORE COMMENCING WORK. CONTRACTOR IS RESPONSIBLE FOR POT-HOLING AND UTILITY SURVEYS AS NECESSARY TO LOCATE EXISTING UTILITIES.
- THE CONTRACTOR SHALL PROVIDE ALL NECESSARY BMP'S AND PROTECTIONS TO DRAINS AND DRAINAGE SYSTEMS AS REQUIRED BY THE PROJECT SWPPP DOCUMENTS AND CALIFORNIA STATE WATER RESOURCES CONTROL BOARD PRIOR TO COMMENCING DEMOLITION.
- CONTRACTOR SHALL BE RESPONSIBLE FOR REPAIRING OR REPLACING ANY EXISTING ITEM DAMAGED OR DESTROYED BY CONSTRUCTION NOT IDENTIFIED FOR DEMOLITION OR REMOVAL. REPLACEMENT OR REPAIRS SHALL BE AT THE CONTRACTOR'S EXPENSE AND ITEM RESTORED TO EQUAL OR BETTER CONDITION.
- THE CONTRACTOR SHALL PROVIDED NECESSARY MEASURES TO CONTROL DUST AND ARBOR SEDIMENT PER PER THE SWPPP DOCUMENTS AND AS REQUIRED BY THE STATE.
- REFER TO AS-BUILT DRAWINGS AND GEOTECHNICAL REPORT FOR DEPTH OF EXISTING PAVING AND BASES.
- CONTRACTOR MUST REMOVE AND DISPOSE OF ALL WEEDS, LOOSE MATERIALS.
- THE CONTRACTOR SHALL OBTAIN ANY REQUIRED PERMITS PRIOR TO DEMOLITION.
- CONTRACTOR IS RESPONSIBLE FOR MAINTAINING IRRIGATION SERVICE TO EXISTING LANDSCAPE MATERIAL TO REMAIN AND TO ADJACENT FIELDS BOTH DURING AND AFTER CONSTRUCTION.
- THE CONTRACTOR MUST CONTACT LOCAL UTILITY LOCATION SERVICES PRIOR TO CONSTRUCTION.
- THE CONTRACTOR MUST PROTECT IN PLACE ALL EXISTING UTILITIES.
- THE CONTRACTOR IS RESPONSIBLE FOR REPAIR OR REPLACEMENT OF UTILITIES DAMAGED DURING CONSTRUCTION.
- REFER TO SPECIFICATIONS FOR ADDITIONAL INFORMATION REGARDING DEMOLITION.
- CONTRACTOR SHALL NOTIFY USA 800-227-2600 PRIOR TO ANY DEMOLITION OR EXCAVATION.
- CONTRACTOR SHALL PROVIDE CONSTRUCTION FENCING PLAN SUBMITTAL FOR REVIEW AND APPROVAL PRIOR TO CONSTRUCTION. CONTRACTOR SHALL MAINTAIN STUDENT ACCESS TO THE CONCESSIONS BUILDING AND BASEBALL FIELD WITH A MINIMUM 6' WIDE PAVED PATH SOUTH OF THE TRACK. THE ACCESS WILL EXTEND FROM THE EXISTING STADIUM ENTRY TO THE VISITOR'S BLEACHERS.



### DSA BACK CHECK

REV.

3 APPEND A 3 11/27/2018

### SANTA TERESA HIGH SCHOOL TRACK & FIELD RENOVATION

6150 Snell Avenue  
San Jose, CA

SCALE: 1"=30'

DESIGNED: BTL

DATE: 10/03/2018

DRAWN: BTL

PROJ. 18-115

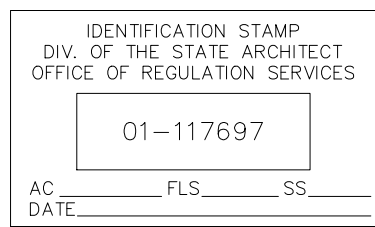
APPROVED:

### DEMOLITION PLAN

DWG. NO.

TF-03





## DSA BACK CHECK

REV.

**3** **ADDENDA 3** **11/27/2018**


**SANTA TERESA HIGH SCHOOL  
TRACK & FIELD RENOVATION**  
6150 Snell Avenue  
San Jose, CA

SCALE: 1"=30'

DESIGNED: BTL

DATE: 10/03/2018

DRAWN: BTL

PROJ. 18-115

APPROVED:

## SURFACING PLAN

DWG. NO.

**TF-04**

## GENERAL NOTES:

- ALL COMPETITION REQUIRED STRIPES AND MARKINGS MUST BE INLAID AND MUST MEET THE LATEST REQUIREMENTS OF NFHS FOOTBALL AND SOCCER RULES. FOOTBALL MARKINGS TO BE WHITE, SOCCER MARKINGS TO BE YELLOW.
- GENERAL CONTRACTOR IS RESPONSIBLE FOR PREPARATION OF THE BASE IN THE TURF AREAS AND FOR COORDINATION WITH THE TURF INSTALLER'S WORK. TURF INSTALLER MUST SUBMIT COMPLETE SHOP DRAWINGS AND COLOR SAMPLES FOR REVIEW AND APPROVAL PRIOR TO INSTALLATION OF SYNTHETIC TURF. SUBMITTALS FOR SHOP DRAWINGS AND COLOR SAMPLES MUST BE IN ACCORDANCE WITH THE SPECIFICATIONS.
- THE OWNER (OR ITS REPRESENTATIVE) MUST REVIEW AND APPROVE THE FONTS USED FOR YARD LINE NUMBERING, ENDZONE LETTERING, AND TRACK MARKINGS PRIOR TO INSTALLATION OF THE SYNTHETIC TURF OR STRIPING OF THE TRACK.

## SURFACING KEY NOTES:

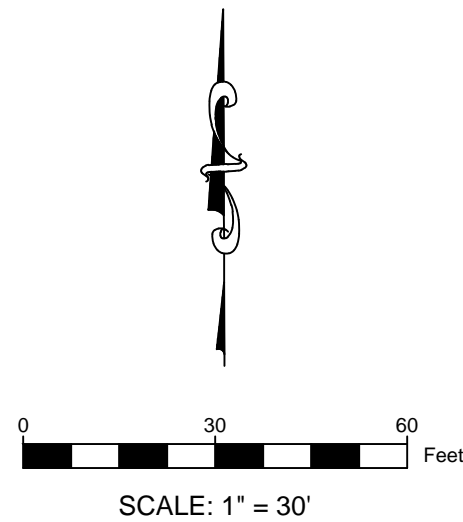
- INSTALL SYNTHETIC TURF SYSTEM, SHOCK/RAIN PAD AND PERMEABLE BASE PER DETAIL 01 ON SHEET TF-10.1
- INSTALL ASPHALT PAVING W/ RUBBERIZED SURFACE PER DETAIL 02 AND 05 ON SHEET TF-10.1.
- INSTALL TRACK RADIUS MONUMENT POINT PER DETAIL 04 ON SHEET TF-10.1.
- INSTALL 6" WIDE CONCRETE INSIDE TRACK CURB PER DETAIL 03 AND 05 ON SHEET TF-10.1.
- INSTALL LONG/TRIPLE JUMP & LANDING PIT SYSTEM PER DETAIL 06 ON SHEET TF-10.1. PIT COVERS TO RECEIVE TRACK SURFACING.
- REPAIR GATES AND INSTALL ACCESSIBLE HARDWARE AS NEEDED, SEE DETAIL 03 ON SHEET TF-10.3.
- INSTALL COMBOX IN SYNTHETIC TURF PER DETAIL 09 ON SHEET TF-10.1
- REPAIR EXISTING FENCE POSTS AS NEEDED. CLEAN, PRIME AND PAINT POSTS. INSTALL NEW VINYL CLAD RAILS & FABRIC. (COLOR BLACK) REFER TO SPECIFICATIONS.
- INSTALL FOOTBALL GOAL POSTS PER DETAIL 10, SHEET TF-10.1 & SPECIFICATIONS.
- INSTALL SLOTTED DRAIN AT D-ZONE & PER DETAIL 07 ON SHEET TF10.1. REFER TO DRAINAGE PLAN FOR LOCATIONS OF CATCH BASINS AND DRAIN PIPE CONNECTIONS.
- INSTALL SLOTTED DRAIN AT SYNTHETIC TURF PER DETAIL 08 ON SHEET TF-10.1.
- INSTALL RUBBERIZED SURFACE OVER EXISTING ASPHALT PER SPECIFICATIONS.
- ACCESSIBLE DRINKING FOUNTAIN, PER DETAIL 06 ON SHEET TF-10.2.
- STORM DRAIN STRUCTURE, SEE DRAINAGE PLAN SHEET TF-06.

## SURFACING LEGEND

- |  |   |
|--|---|
|  | PERMEABLE & SYNTHETIC TURF SYSTEM.                          |
|  | NEW ASPHALT PAVING W/ RUBBERIZED SURFACE.                   |
|  | SYNTHETIC TRACK SURFACE OVER EXISTING ASPHALT OR PIT COVER. |



KEYNOTE CALLOUT SYMBOL



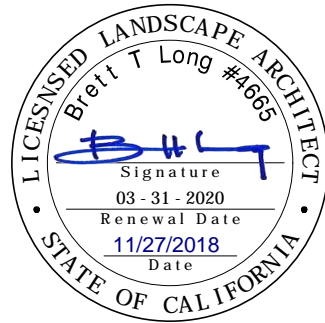


IRRIGATION EQUIPMENT LEGEND:

- CONNECT TO EXISTING IRRIGATION MAINLINE
- CUT AND CAP EXISTING MAINLINE AT APPROXIMATE LOCATION
- IRRIGATION MAINLINE (2" EXCEPT WHERE NOTED OTHERWISE)  
SOLVENT WELD CLASS 200 PVC W/ SCH 80 FITTINGS
- ISOLATION GATE VALVE (SIZE TO MATCH MAINLINE)  
NIBCO T113-K
- QUICK COUPLER VALVE WITH PURPLE CAP (1" SIZE)  
RAIBIRD 44-RC IN SYNTHETIC TURF COMBOX
- 3/4" DOMESTIC WATER QUICK COUPLER  
RAIBIRD 3RC IN SYNTHETIC TURF COMBOX
- SLEEVE PIPE 2X NOMINAL SIZE OF CARRIER PIPE  
INSTALL BELOW ALL HARDSCAPE CROSSINGS
- REPLACE EXISTING ELECTRICAL & COMM BOXES, SLEEVING  
AND LEADS AS TO MAINTAIN EXISTING SERVICE  
TO FIELD.

IRRIGATION NOTES:

- CONNECT TO EXISTING MAINLINE THE APPROXIMATE LOCATION SHOWN. FLOW AND PRESSURE MUST BE VERIFIED BY CONTRACTOR PRIOR TO CONSTRUCTION. IF PRESSURE IS LESS THAN 50 PSI AT 40GPM NOTIFY ENGINEER IMMEDIATELY.
- REFER TO SPECIFICATIONS FOR ALL PRESSURE TESTING AND FLUSHING REQUIREMENTS.
- ALL IRRIGATION VALVE AND PIPE SYMBOL LOCATIONS ARE DIAGRAMMATIC. DO NOT INSTALL IRRIGATION EQUIPMENT IN DIRECT CONFLICT WITH UTILITY, LANDSCAPE, OR HARDSCAPE ELEMENTS. COORDINATE LOCATION OF ALL NEW AND EXISTING UTILITIES PRIOR TO IRRIGATION INSTALLATION. CONTACT ENGINEER IMMEDIATELY IF CONFLICTS ARE LOCATED.
- EXISTING UTILITIES SHOWN ARE FOR REFERENCE ONLY. ADDITIONAL UTILITIES MAY BE PRESENT. CONTRACTOR MUST UTILIZE UTILITY LOCATION SERVICE PRIOR TO CONSTRUCTION AND TRENCH WITH CAUTION. CONTRACTOR IS RESPONSIBLE TO REPAIR OR REPLACE ANY UTILITIES DAMAGED DURING CONSTRUCTION.
- CUT AND CAP ANY ACTIVE IRRIGATION LINES ENTERING THE TRACK AREA. CONTRACTOR MUST AS-BUILT ALL LIVE IRRIGATION LINES FOUND DURING CONSTRUCTION.
- CONTRACTOR IS REQUIRED TO VERIFY THAT FLOW AND AUTOMATIC CONTROL TO ALL LANDSCAPE IRRIGATION SURROUNDING THE TRACK REMAINS FUNCTIONAL DURING AND AFTER CONSTRUCTION.



IDENTIFICATION STAMP DIV. OF THE STATE ARCHITECT OFFICE OF REGULATION SERVICES		
01-117697		
AC	FLS	SS
DATE		

DSA BACK CHECK

REV. 3 APPEND A 3 11/27/2018

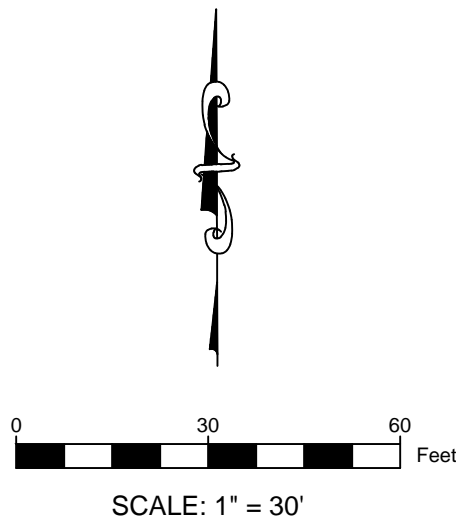
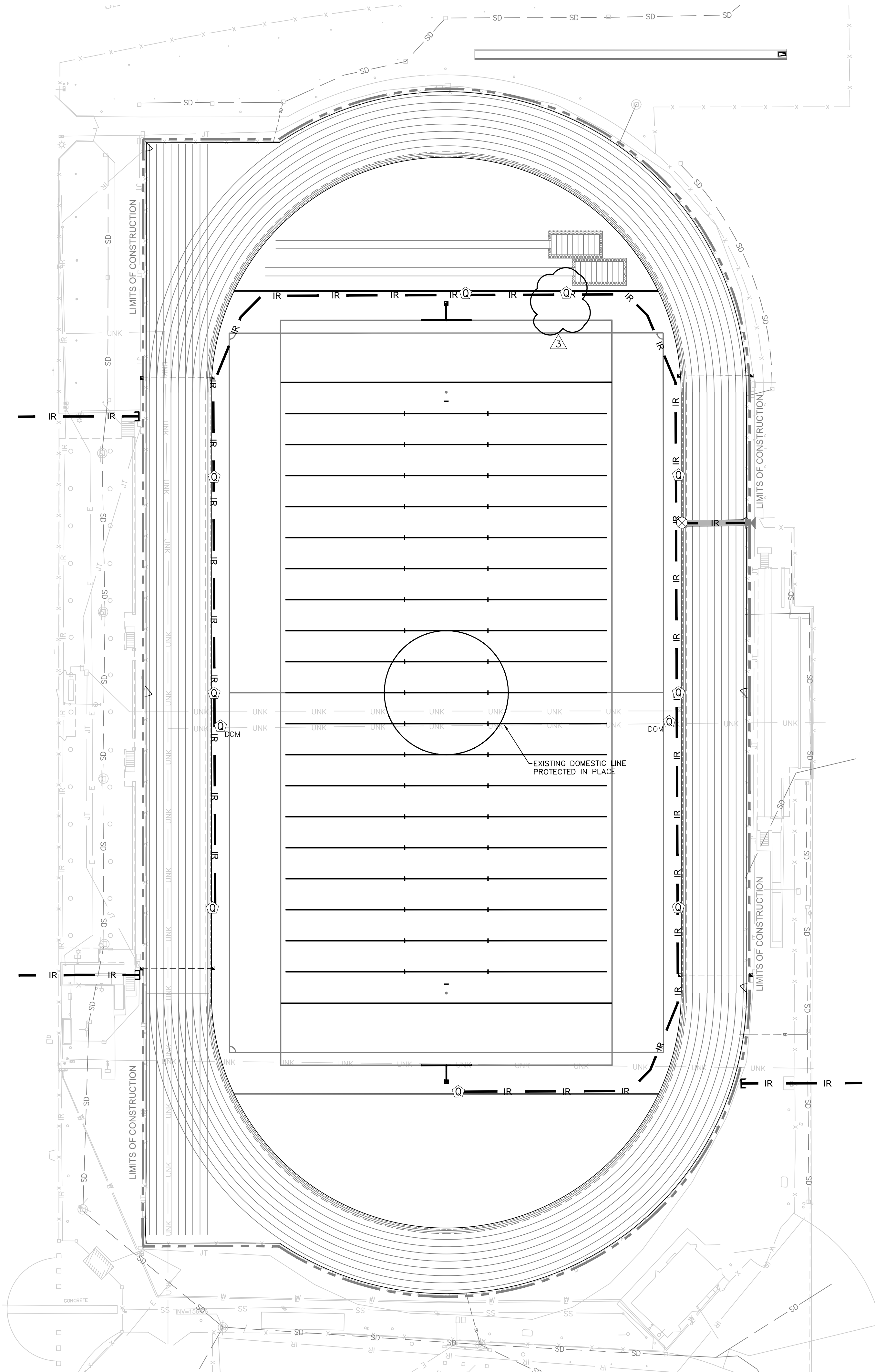
SANTA TERESA HIGH SCHOOL  
TRACK & FIELD RENOVATION  
6150 Snell Avenue  
San Jose, CA

SCALE: 1"=30'  
DESIGNED: BTL  
DATE: 10/03/2018  
DRAWN: BTL  
PROJ. 18-115  
APPROVED:

IRRIGATION PLAN

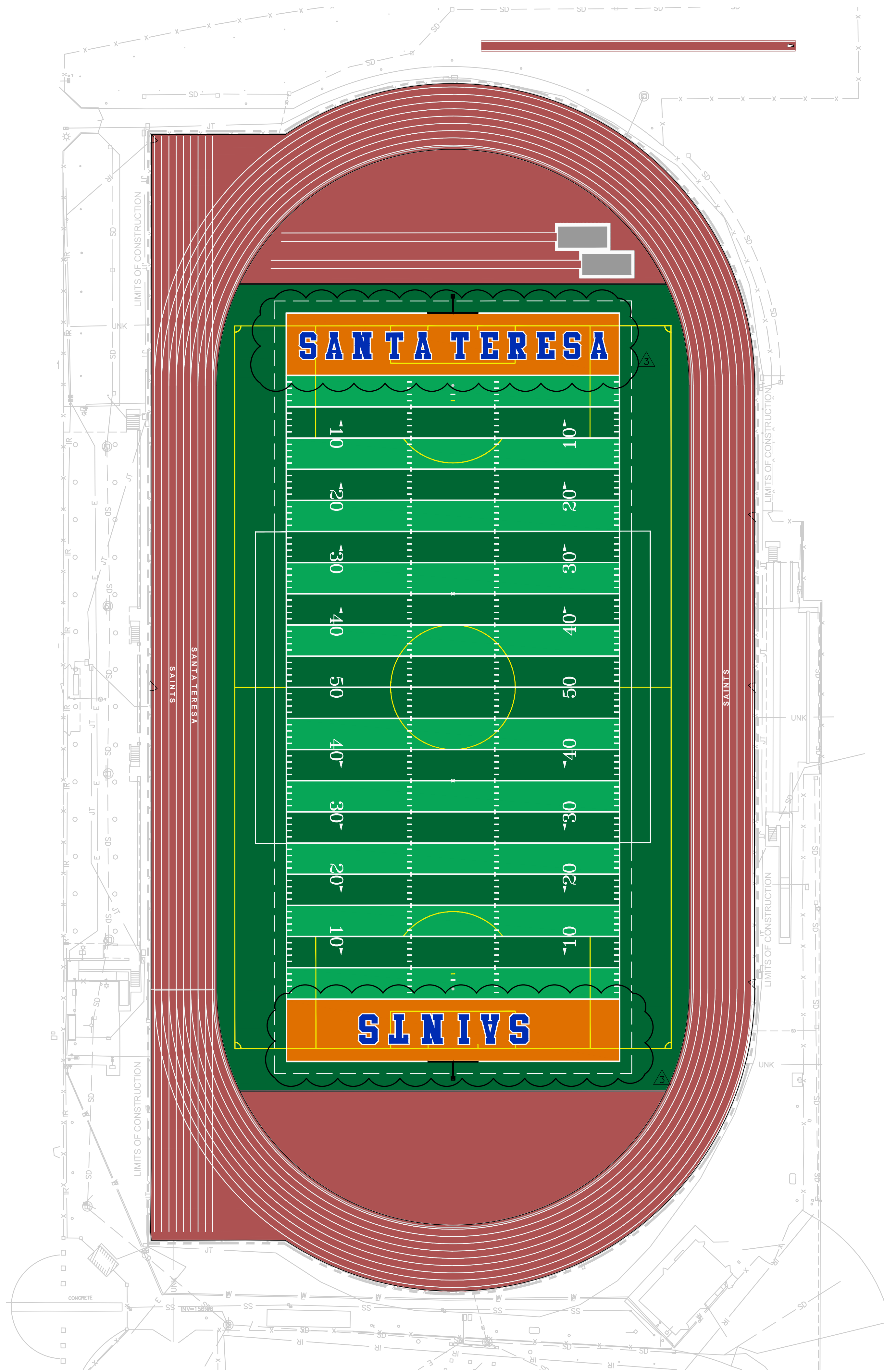
DWG. NO.

TF-09





This plan document set is the sole property of Lloyd Consulting Group, LLC. No alterations to these plans, other than adding "as-built" information, are allowed by anyone other than authorized Lloyd Consulting Group, LLC employees.

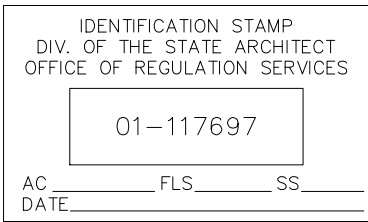


COLOR GRAPHICS NOTES:

1. THIS GRAPHICS PLAN IS FOR REFERENCE ONLY. THE TURF MANUFACTURER AND INSTALLER MUST SUBMIT FOR REVIEW SHOP DRAWINGS PER SPECIFICATIONS.
2. ALL LINE WORK MUST BE IN ACCORDANCE WITH NFHS RULES AND REGULATIONS FOR SOCCER, FOOTBALL AND TRACK AND FIELD.
3. FOOTBALL IS TO BE THE DOMINATE LINE COLOR OVER SOCCER.
4. COLOR SELECTION IS TO BE FINALIZED DURING SHOP DRAWING SUBMITTAL REVIEW.
5. TURF MAY NOT BE PURCHASED UNTIL SHOP DRAWINGS AND PHYSICAL SAMPLES ARE APPROVED IN WRITING BY THE OWNER.
6. TRACK TO RECEIVE LETTERING ON HOME AND AWAY SIDE PER PLAN.

COLOR GRAPHICS LEGEND

- |  |   |
|--|---|
|  | SYNTHETIC TURF COLOR GREEN  |
|  | FOOTBALL STRIPING COLOR WHITE<br>SOCCER STRIPING COLOR YELLOW                               |
|  | SYNTHETIC TURF COLOR LIGHT GREEN  |
|  | FOOTBALL STRIPING COLOR WHITE<br>SOCCER STRIPING COLOR YELLOW                               |
|  | ENDZONE SYNTETIC TURF COLOR ORANGE  |
|  | LETTERING COLOR BLUE WITH WHITE OUTLINE   |
|  | SYNTHETIC TRACK SURFACE COLOR STANDARD RED  |
|  | LANE LINES COLOR WHITE. (DETAILED TRACK MARKINGS<br>AND COLORS SHALL BE PER SHOP DRAWINGS.) |



DSA BACK CHECK

REV.		
3	ADDENDA 3	11/27/2018

SANTA TERESA HIGH SCHOOL  
TRACK & FIELD RENOVATION  
6150 Snell Avenue  
San Jose, CA

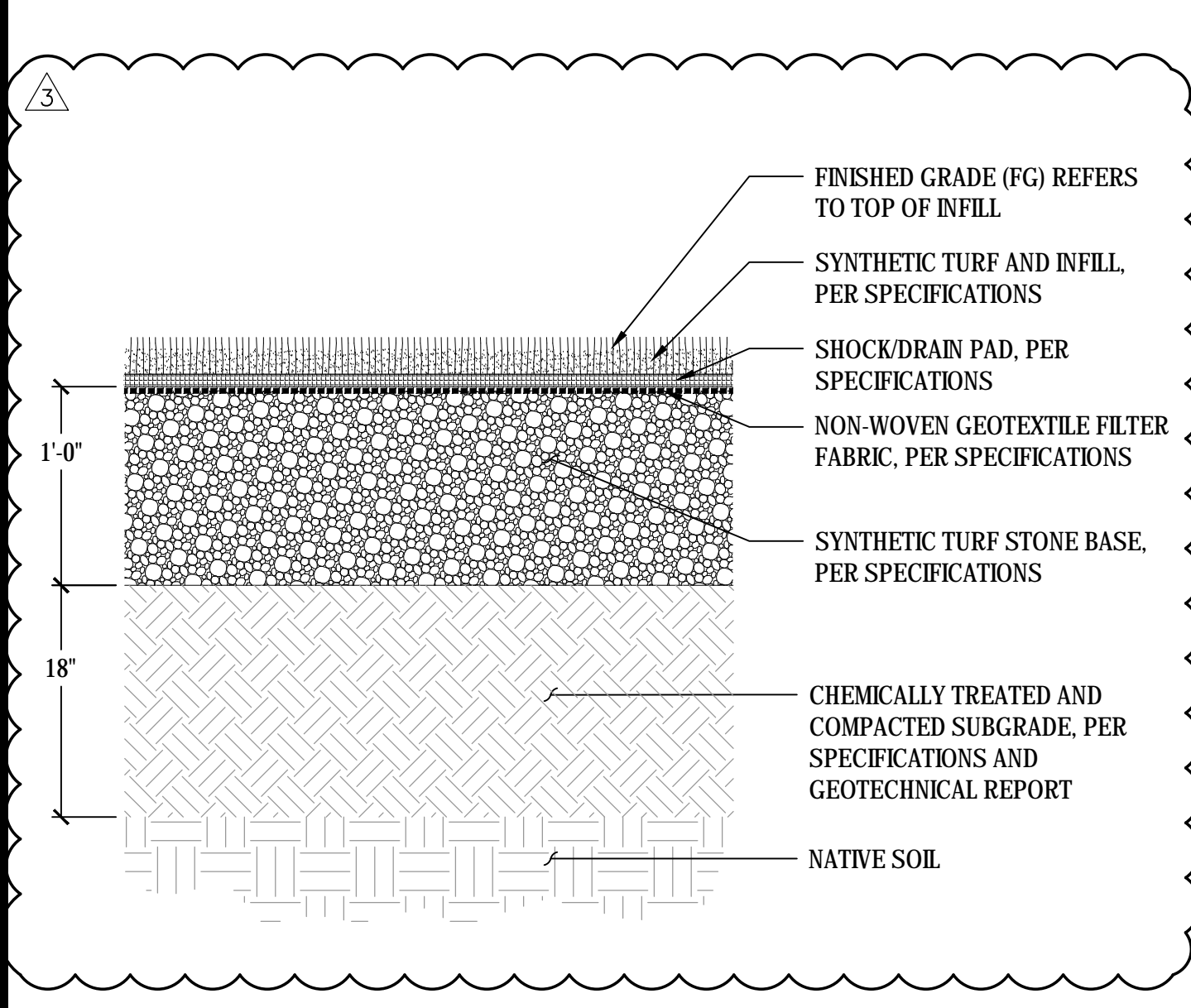
SCALE: 1"=30'
DESIGNED:BTL
DATE:10/03/2018
DRAWN: BTL
PROJ. 18-115
APPROVED:

TURF GRAPHICS PLAN

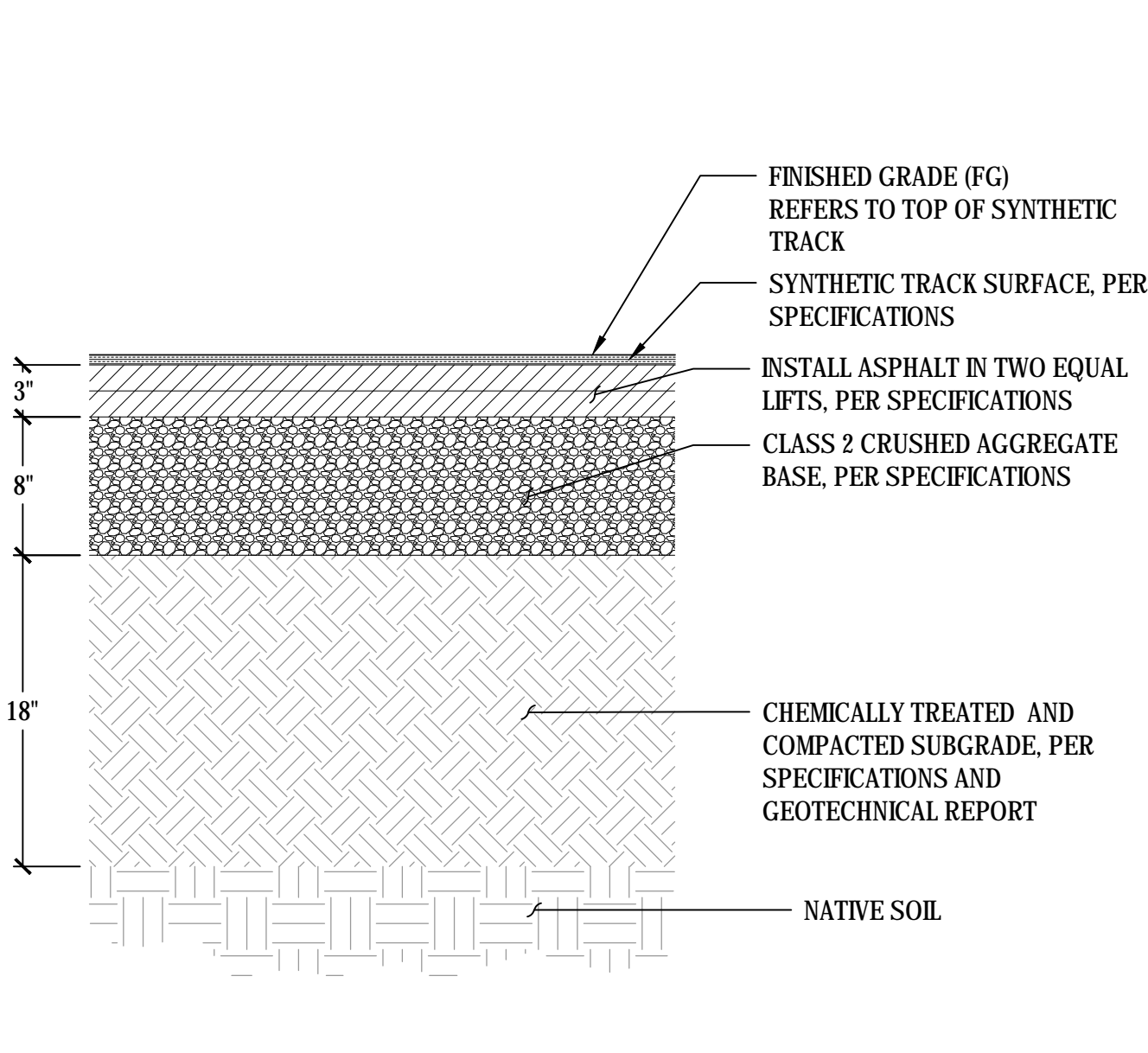
DWG. NO.

TF-08

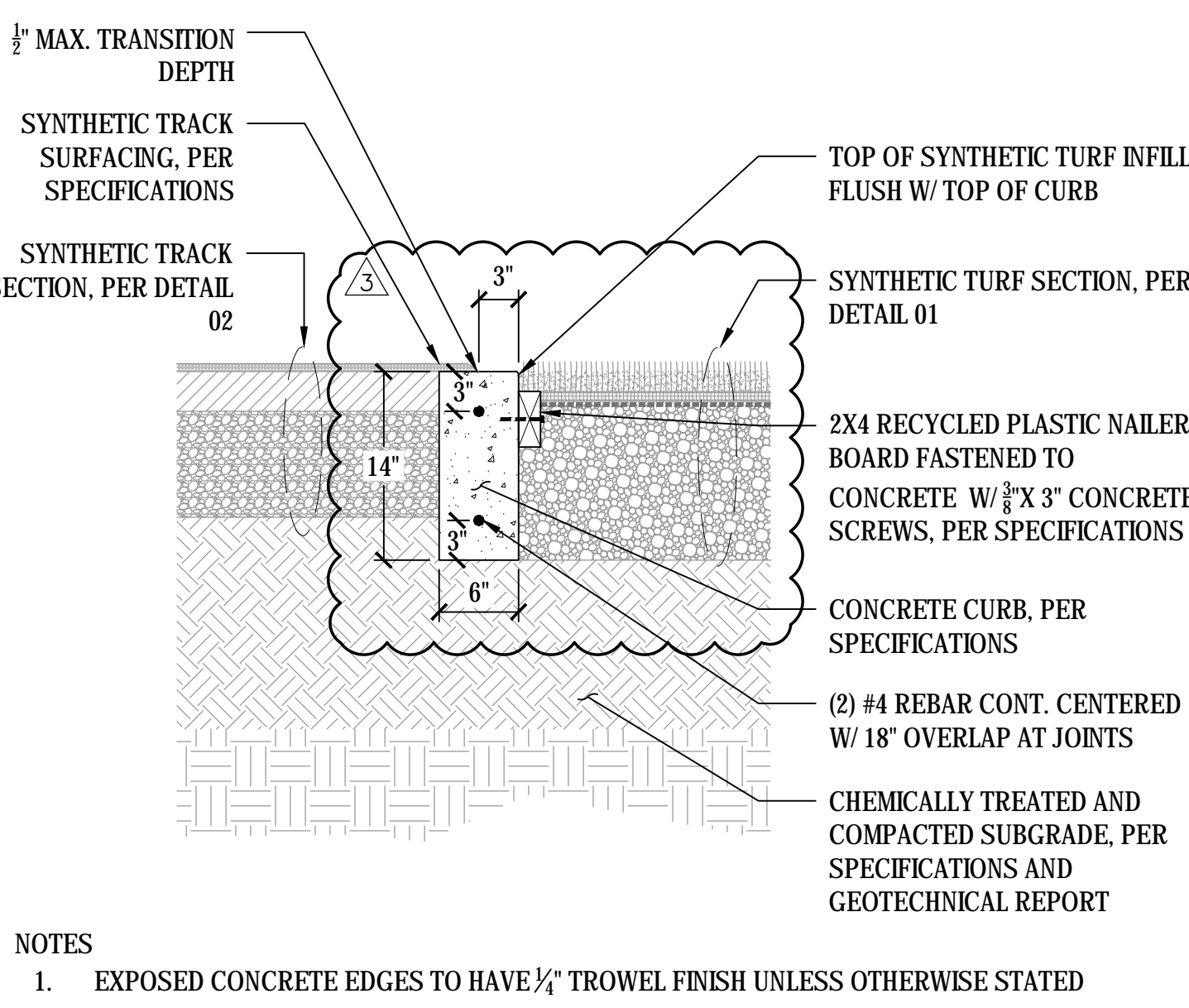




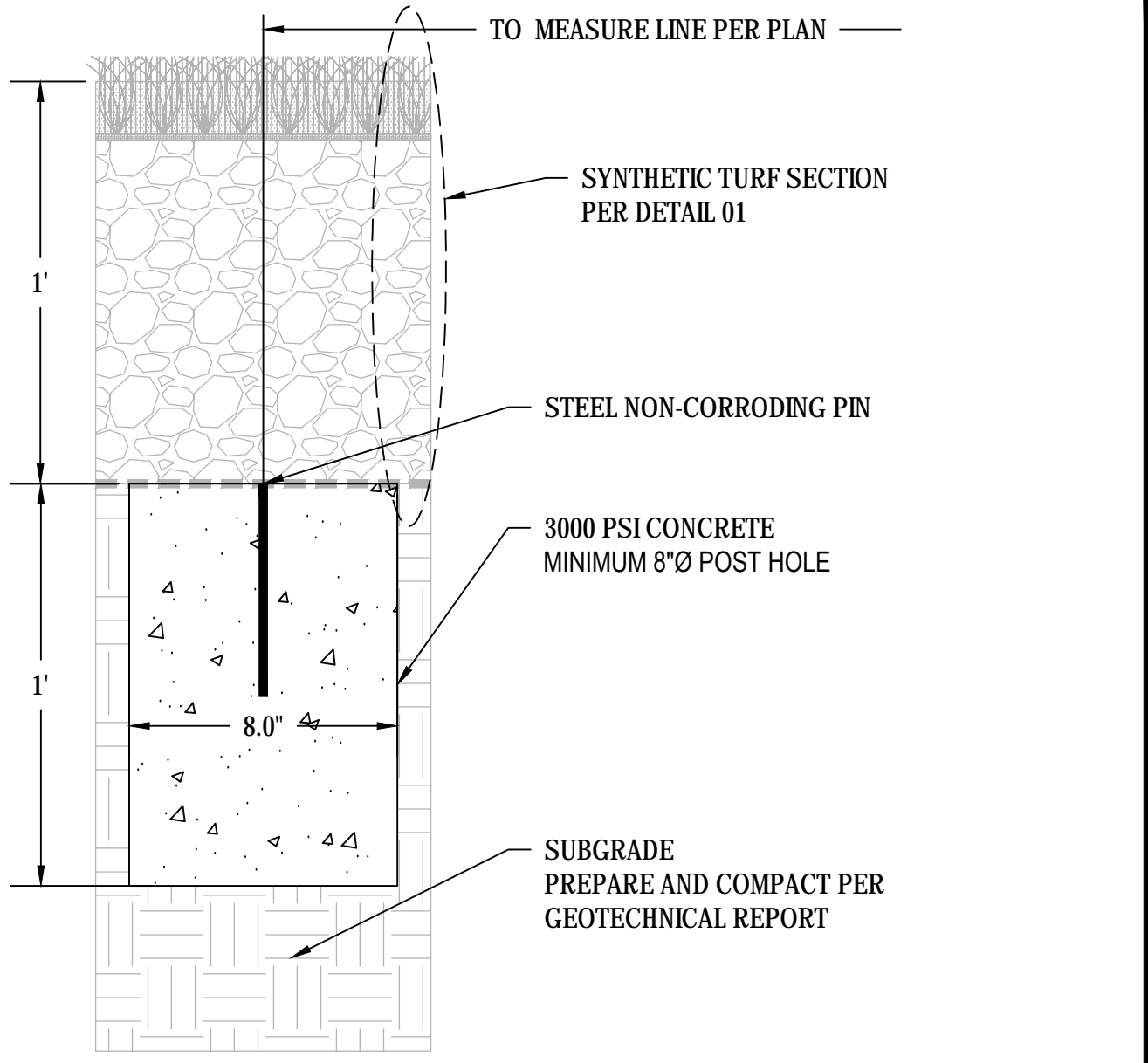
01 SYNTHETIC TURF SECTION  
SCALE: NTS



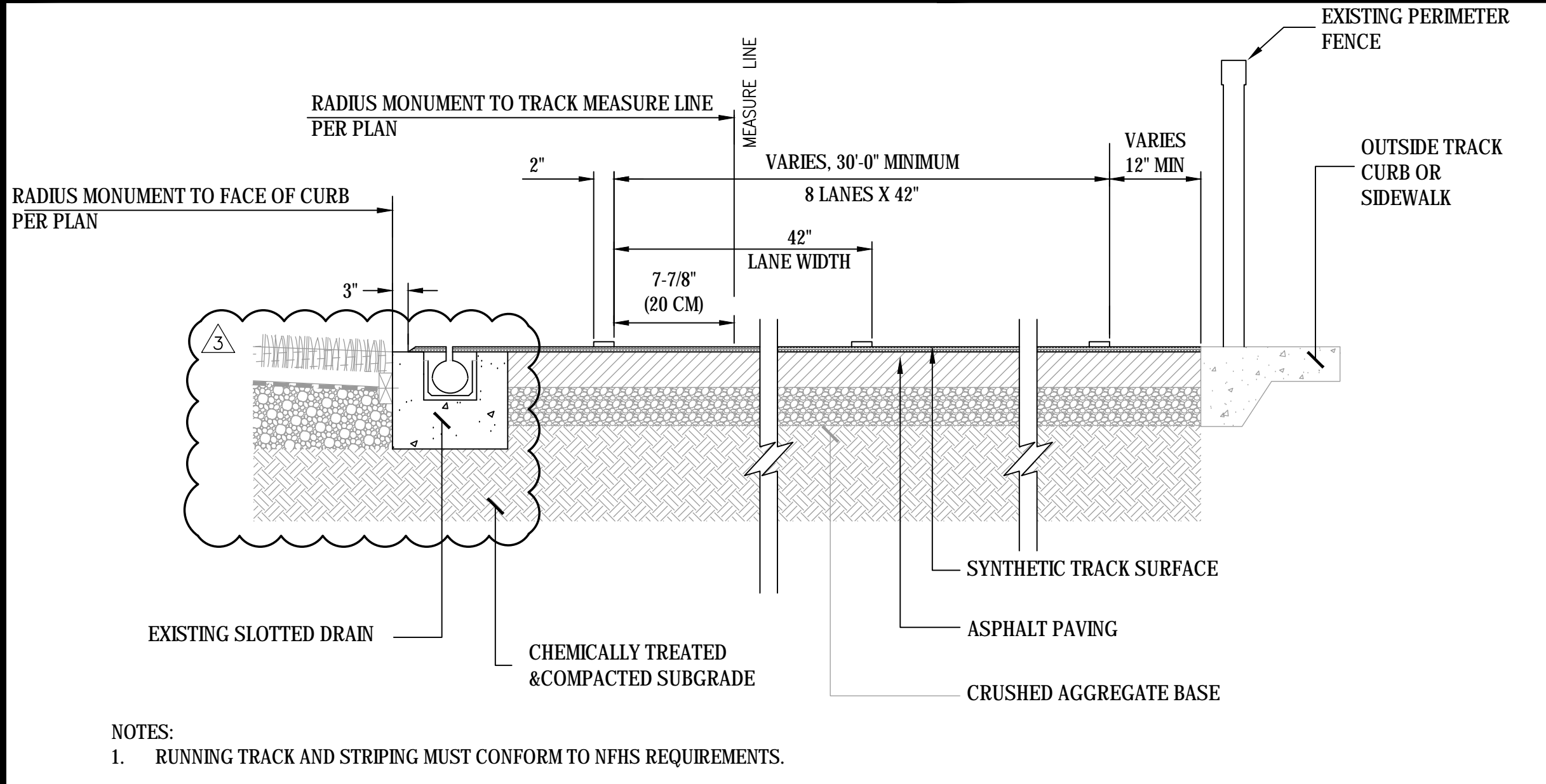
02 TRACK SECTION  
SCALE: NTS



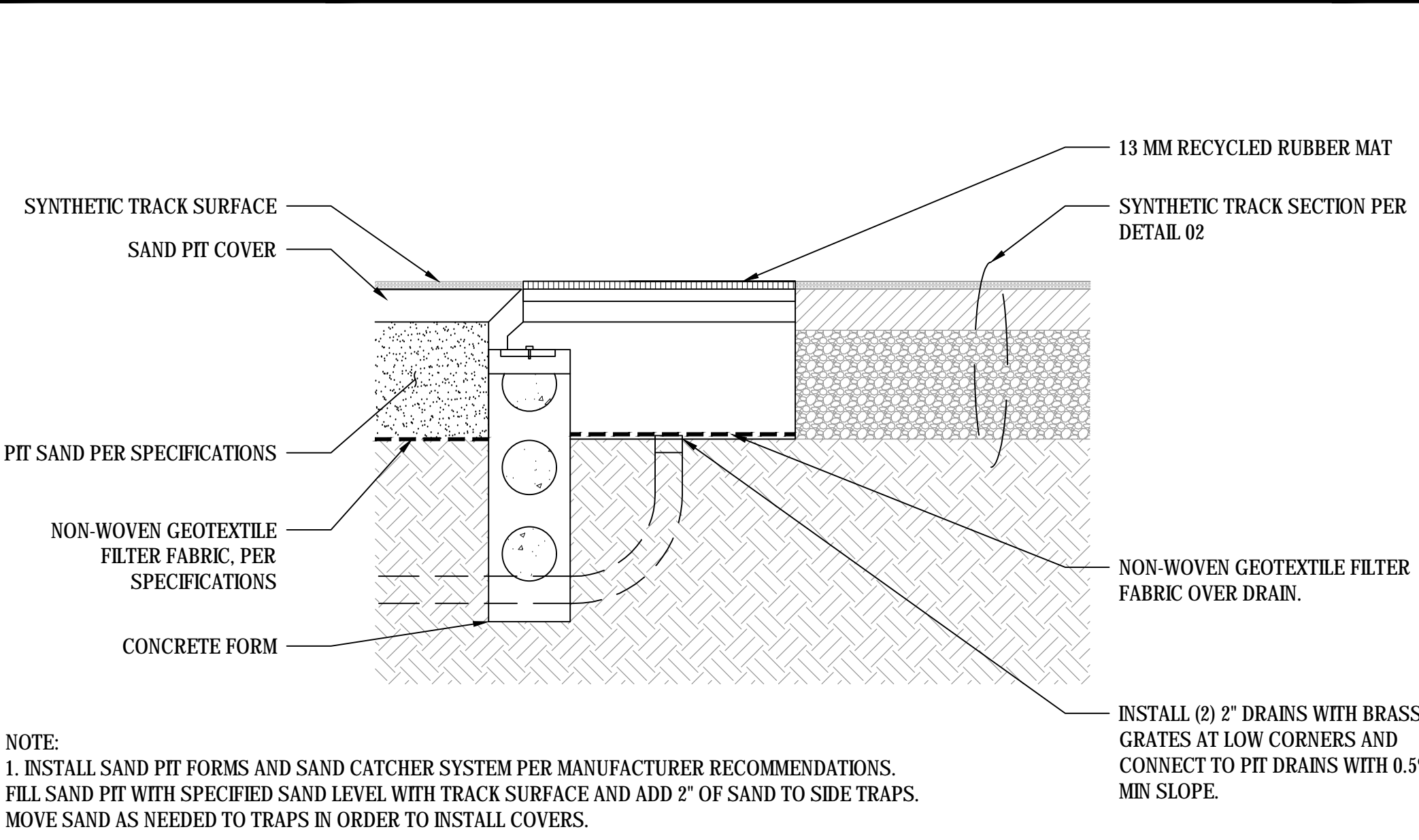
03 TRACK INSIDE CURB  
SCALE: NTS



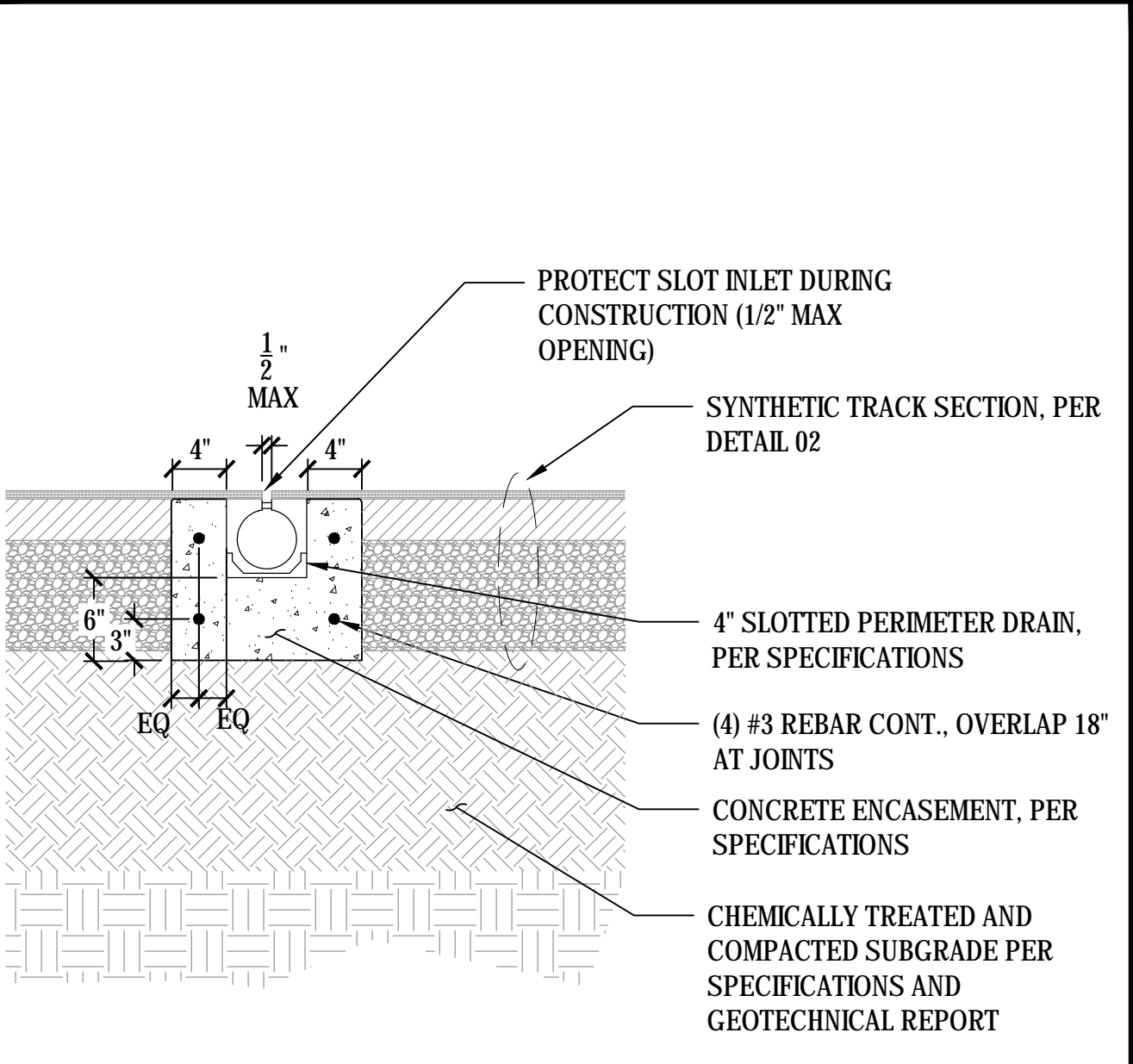
04 TRACK RADIUS MONUMENT  
SCALE: NTS



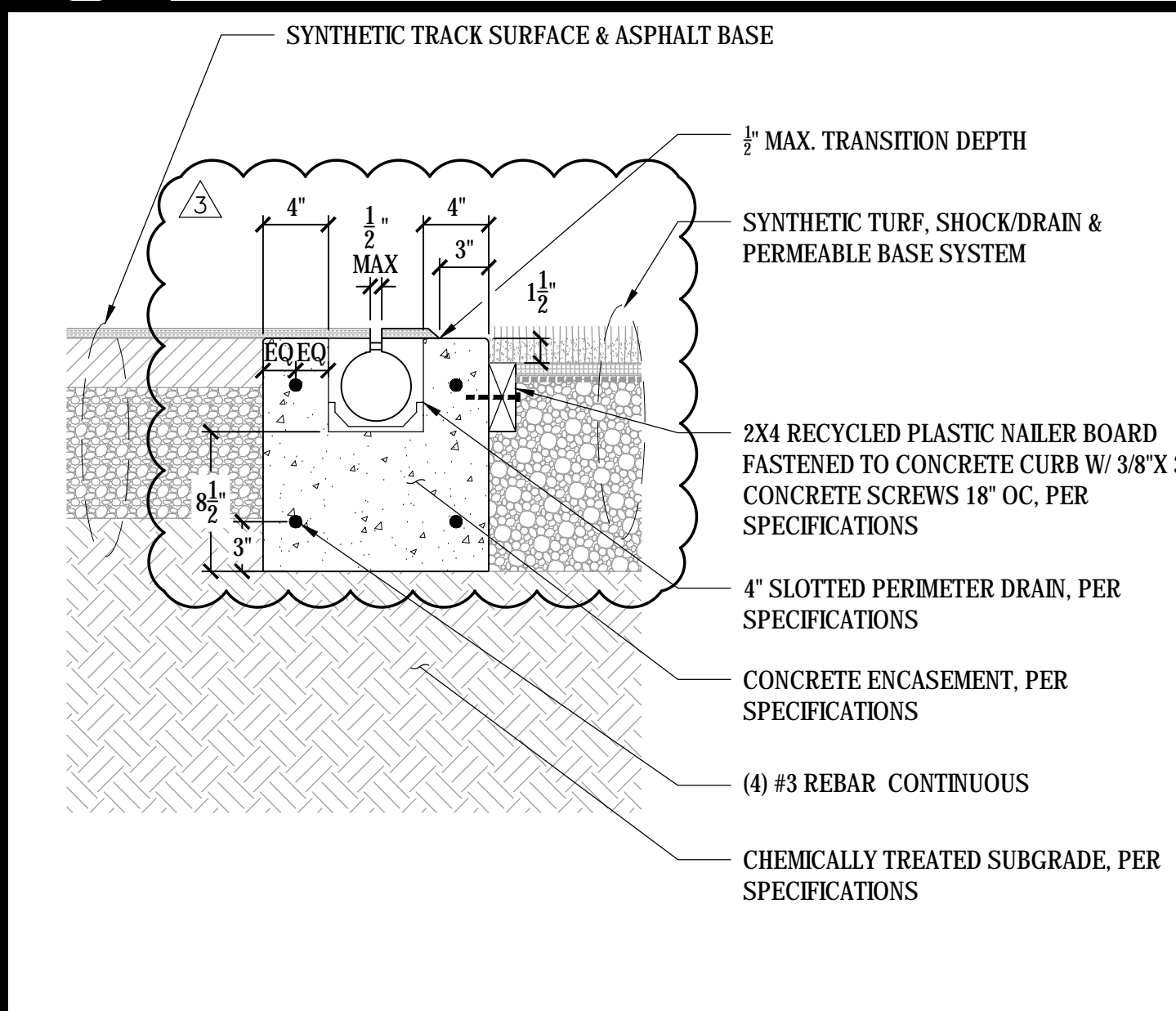
05 TRACK LAYOUT  
SCALE: NTS



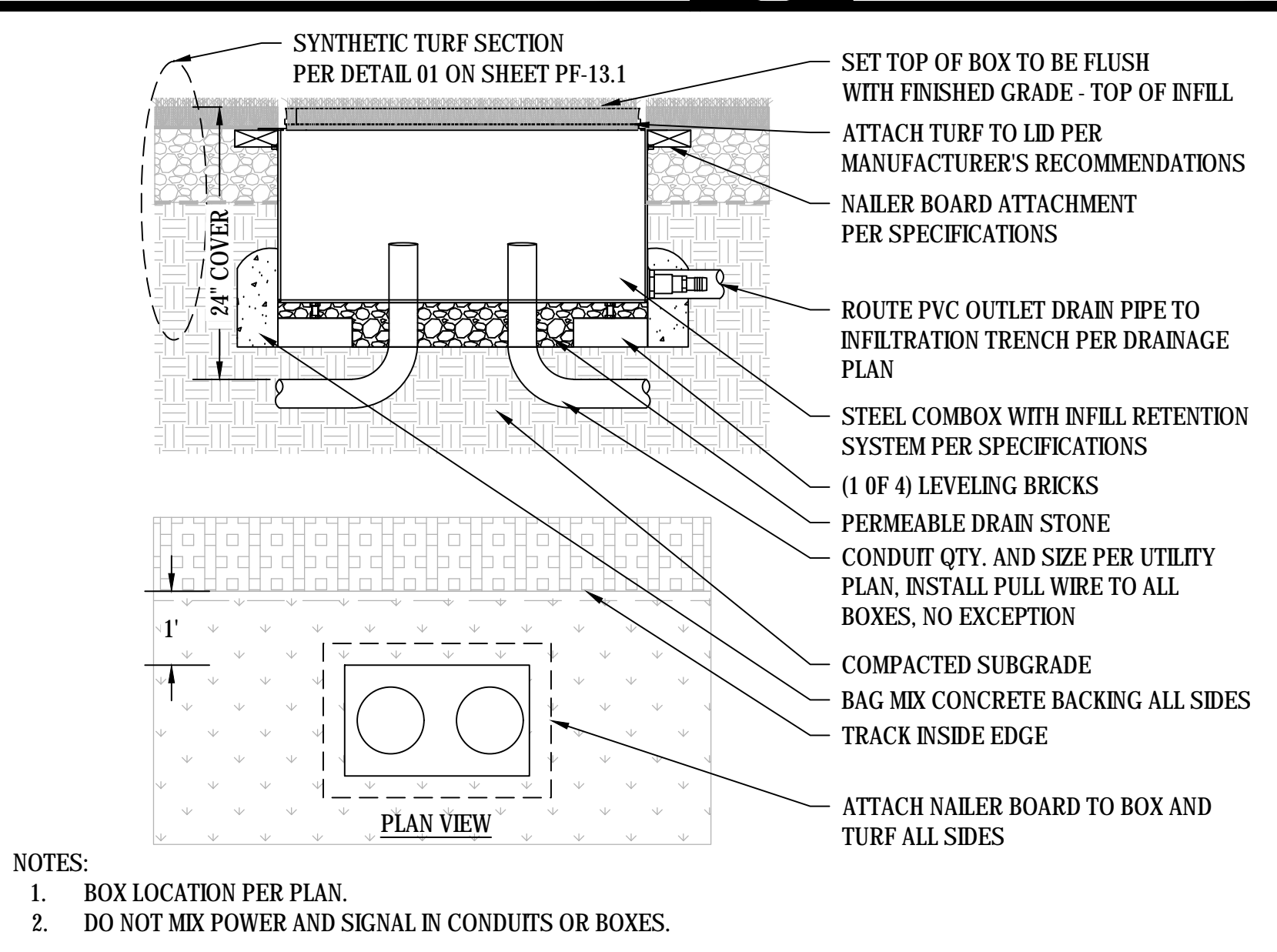
06 LONG JUMP SAND PIT  
SCALE: NTS



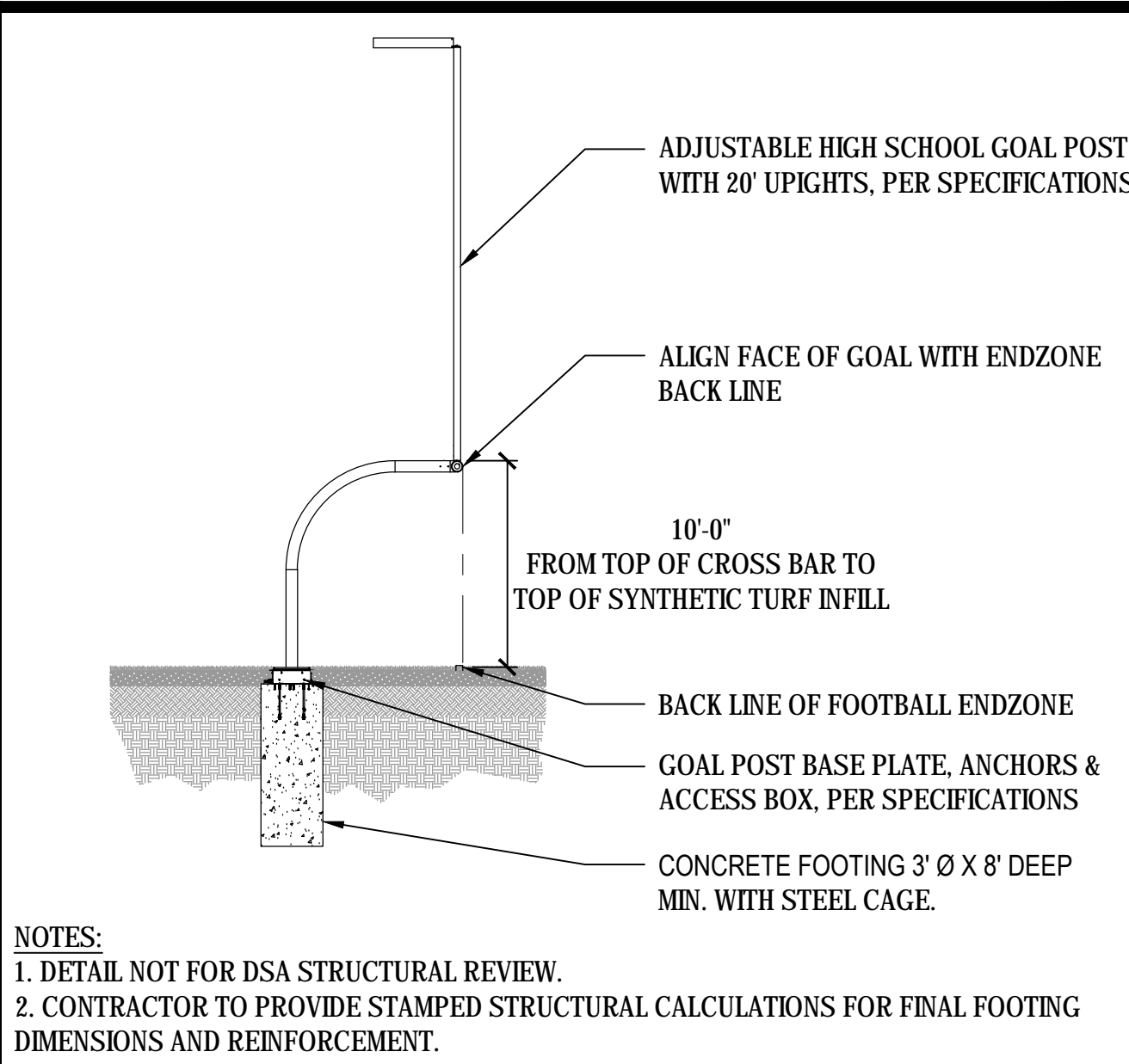
07 D-ZONE SLOT DRAIN  
SCALE: NTS



08 TRACK SLOTTED PERIMETER DRAIN CURB  
SCALE: NTS



09 COMBOX IN SYNTHETIC TURF  
SCALE: NTS



10 FOOTBALL GOAL POSTS  
SCALE: NTS

DSA BACK CHECK

REV.	
3	ADDENDA 3 11/27/2018

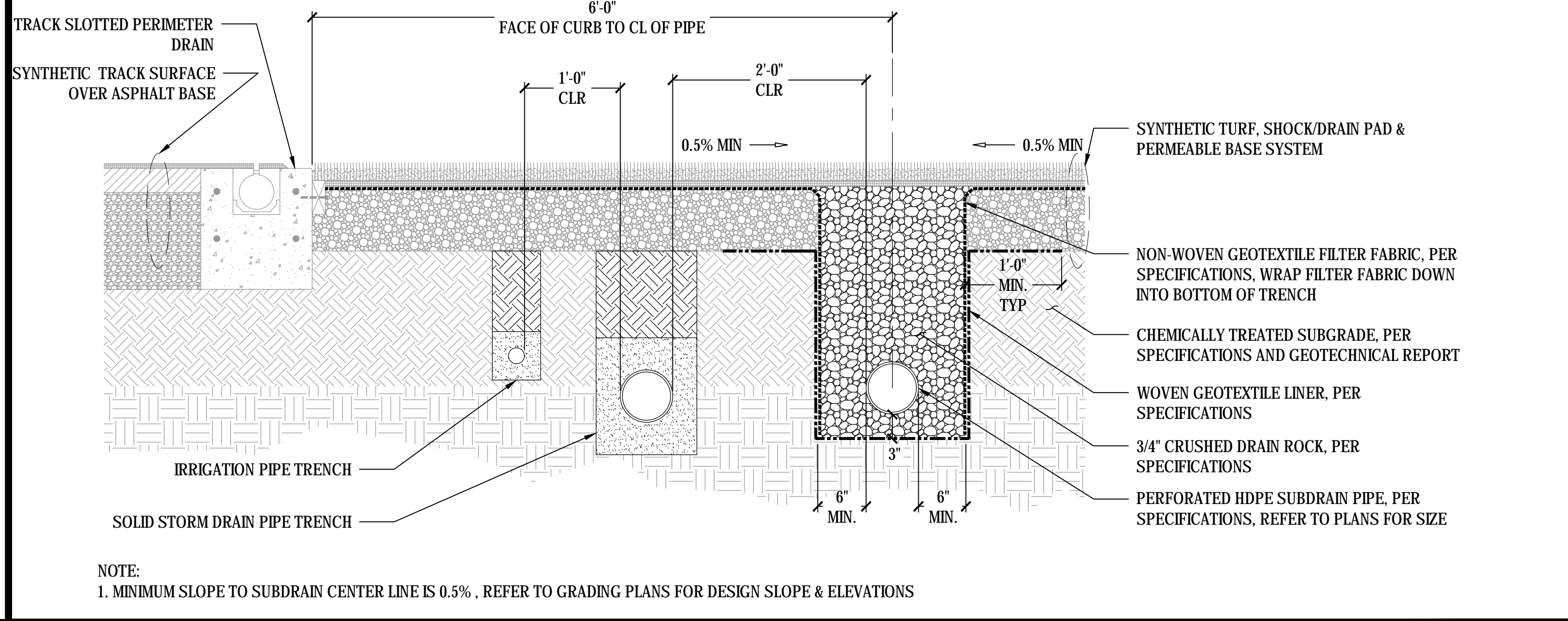
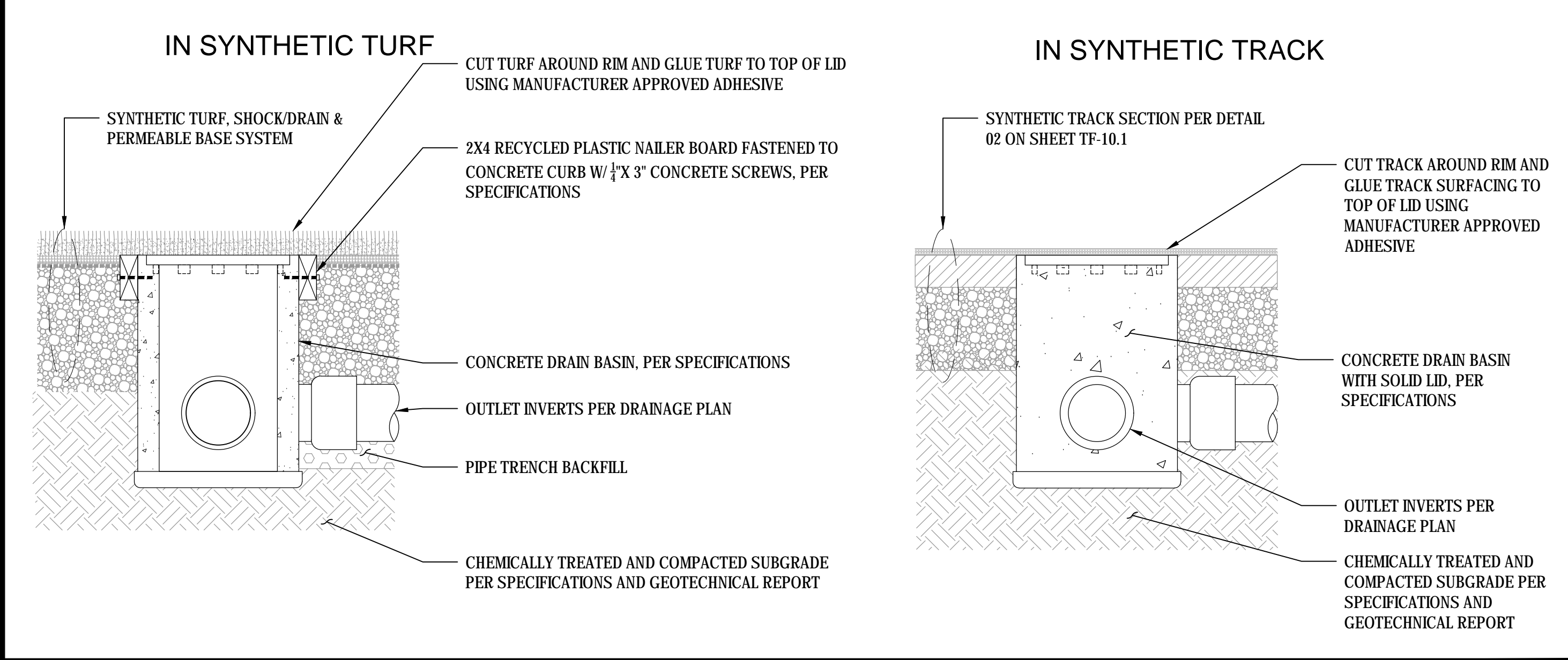
SANTA TERESA HIGH SCHOOL  
TRACK & FIELD RENOVATION  
6150 Snell Avenue  
San Jose, CA

SCALE:	N.T.S.
DESIGNED:	BTL
DATE:	10/03/2018
DRAWN:	—
PROJ.	18-115
APPROVED:	

TRACK AND FIELD  
DETAILS  
DWG. NO.  
TF-10.1

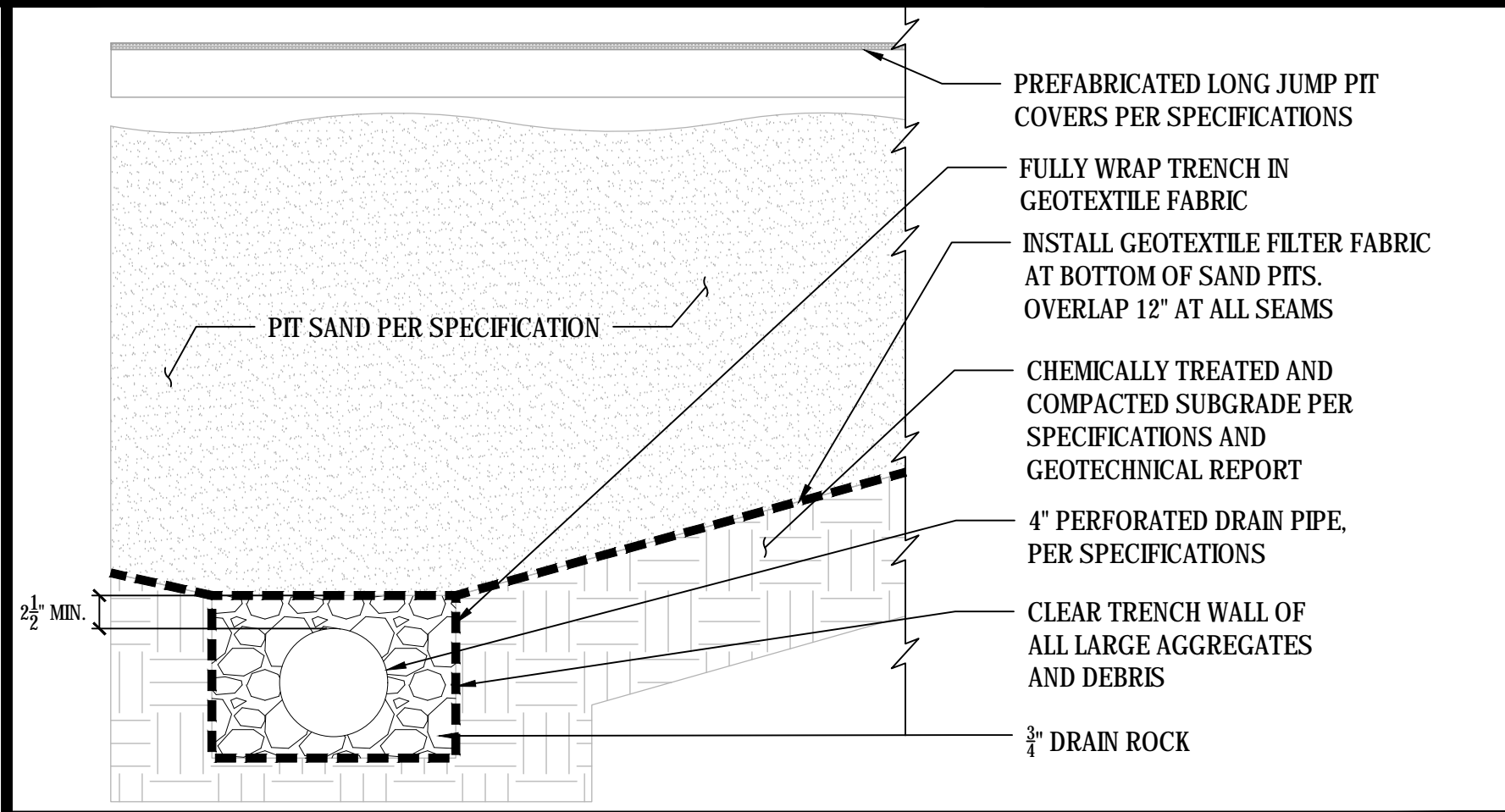
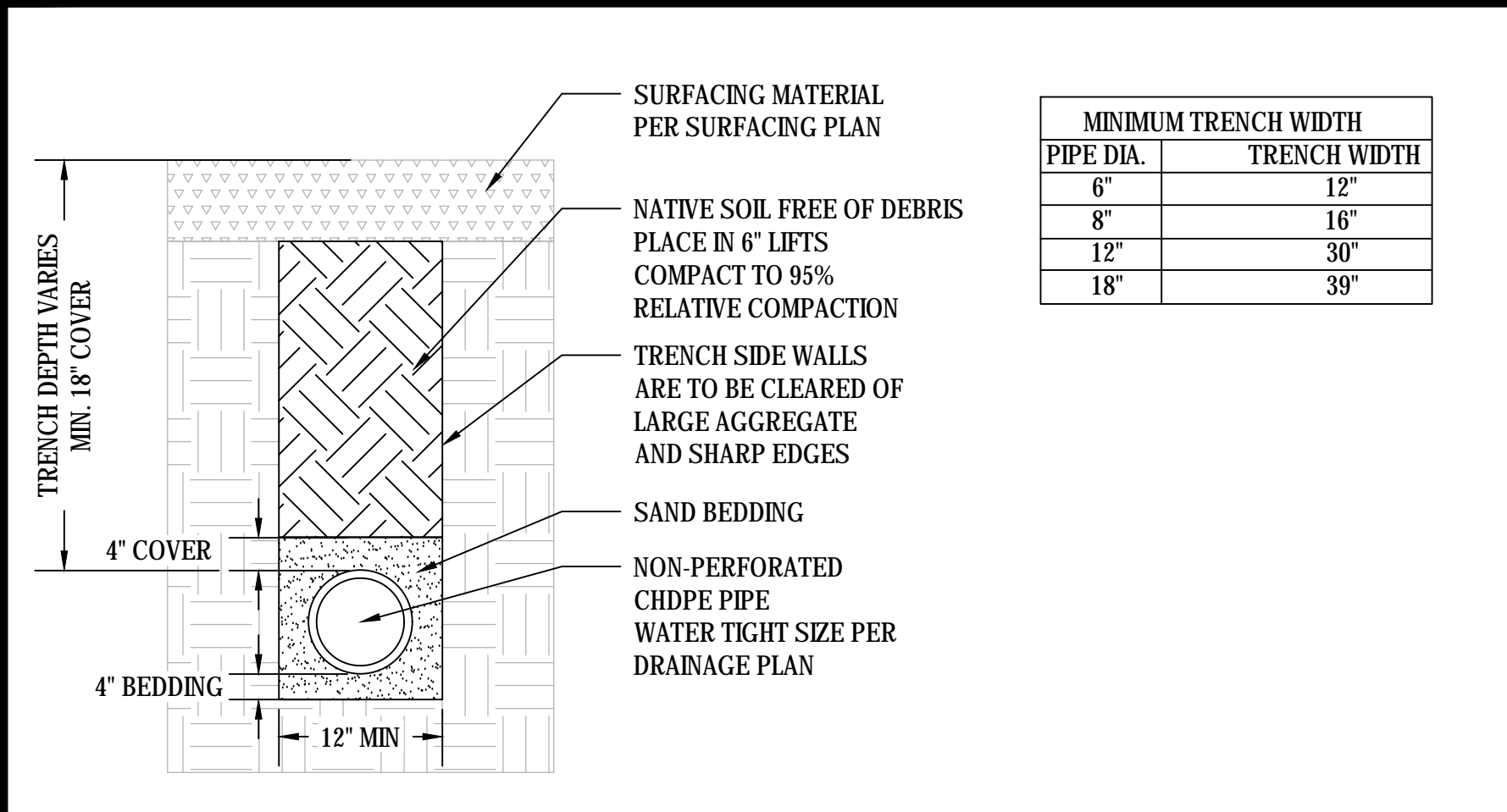


This plan document set is the sole property of Lloyd Consulting Group, LLC. No alterations to these plans, other than adding "as-built" information, are allowed by anyone other than authorized Lloyd Consulting Group, LLC employees.



**01 DRAIN BASIN**

SCALE: NTS

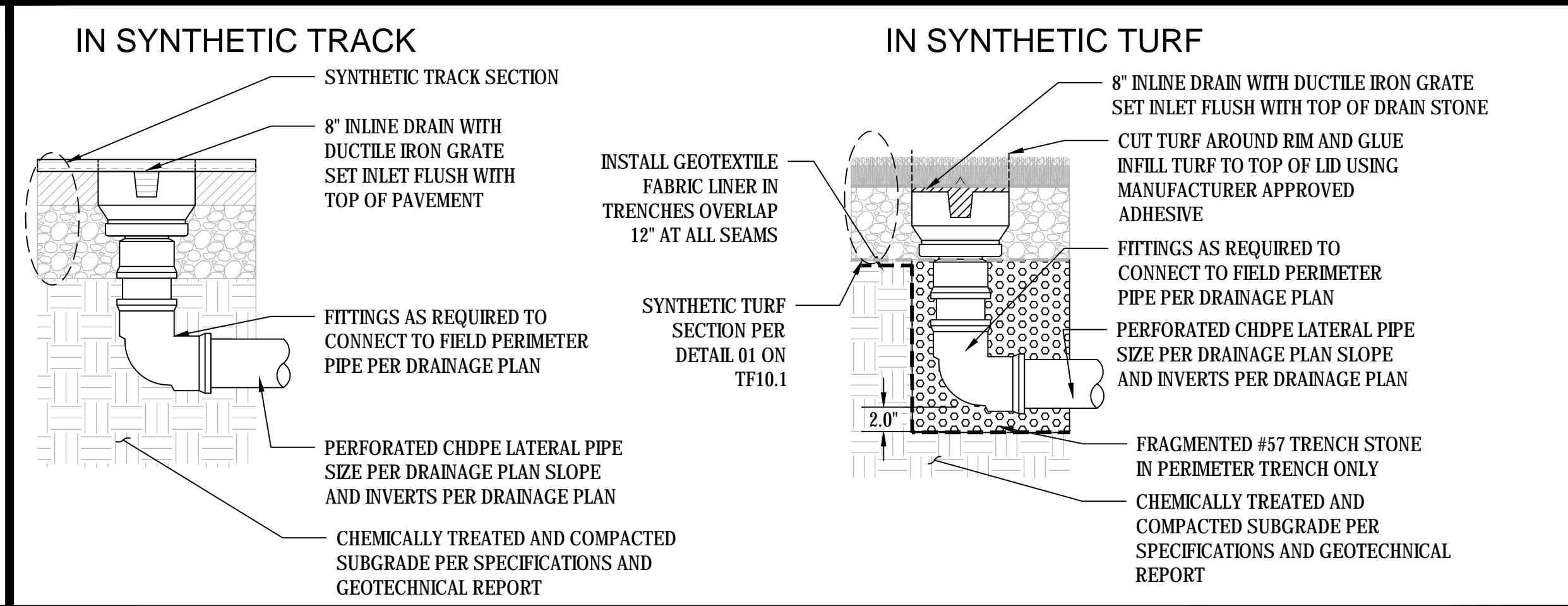


**03 SOLID DRAIN PIPE TRENCH**

SCALE: NTS

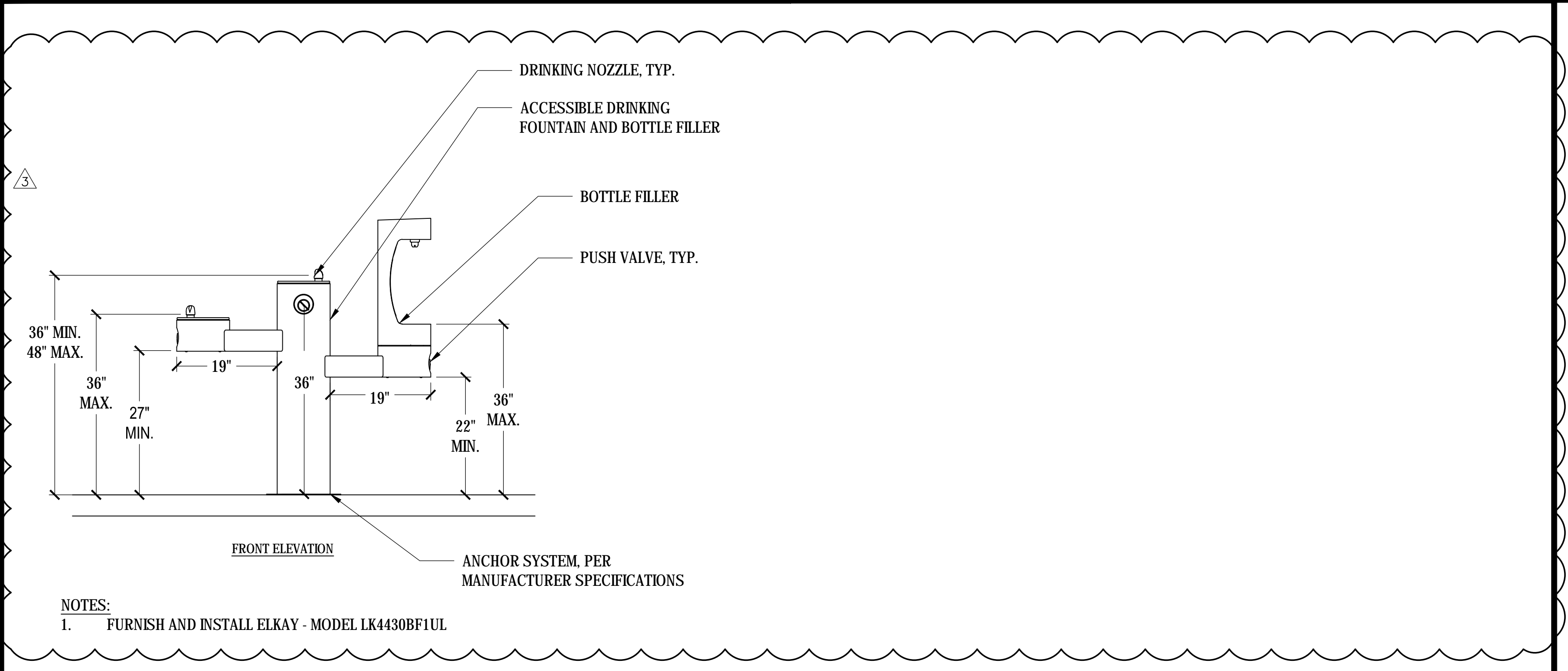
**04 LONG/TRIPLE JUMP PIT DRAIN**

SCALE: NTS



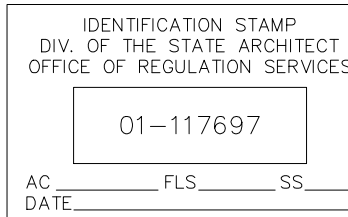
**05 STORM DRAIN CLEAN OUT**

SCALE: NTS



**06 DRINKING FOUNTAIN / FILLING STATION**

SCALE: NTS



DSA BACK CHECK		
REV.		
3	ADDENDA 3	11/27/2018

**SANTA TERESA HIGH SCHOOL  
TRACK & FIELD RENOVATION**  
6150 Snell Avenue  
San Jose, CA

SCALE: AS NOTED  
DESIGNED: BTL  
DATE: 10/03/2018  
DRAWN: —  
PROJ. 18-115  
APPROVED:

**DRAINAGE DETAILS**

DWG. NO.  
**TF-10.2**